

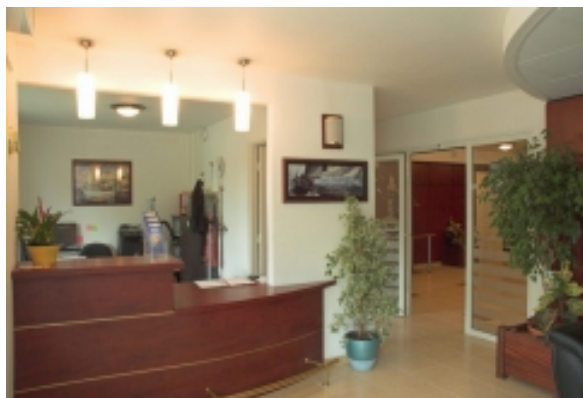
# LIVING™

BY BRIDGESTREET

## APART`CITY - LOUVECIENNES

9 BIS QUAI CONTI · LOUVECIENNES, 78430 FRANCE

Half an hour from Paris by train, Louveciennes is famous for its past as well as its pristine landscapes. It features a number of castles and parks filled with history, in an exceptional natural setting. The city's charms inspired many Impressionist painters.



### AT THIS LOCATION

- Disabled Accessible Units
- Lift/Elevators Present / ascenseur
- Reception 8am to 8pm daily

### IN THE APARTMENT

- Fully-Equipped Kitchen
- High Speed Internet Available

### SERVICES

- Breakfast Service
- Weekly Housekeeping / 1 menage par semaine
- Weekly Linen Change

**BRIDGESTREET**  
GLOBAL HOSPITALITY

+33 (1) 42 94 13 13  
BRIDGESTREET.COM

EXCLUSIVE.  
BY BRIDGESTREET

RESIDENCES.  
BY BRIDGESTREET

MODE.  
A PARTHOTEL

LIVING.  
BY BRIDGESTREET

PLACES.  
BY BRIDGESTREET

STÜDYO.  
BY BRIDGESTREET

# LIVING™

BY BRIDGESTREET



## IN THE AREA

- By car : From Paris, take the A14, then join the A86 direction "Poissy/Versailles". At Rueil Malmaison exit and take the N13. Arriving at Bougival follow the N13 to Quai Conti.

## APART`CITY - LOUVECIENNES

9 BIS QUAI CONTI · LOUVECIENNES, 78430 FRANCE

Call us: +33 (1) 42 94 13 13

Distance from city center: 0.9 mile(s)

**BRIDGESTREET.**  
GLOBAL HOSPITALITY

+33 (1) 42 94 13 13  
BRIDGESTREET.COM

EXCLUSIVE.  
BY BRIDGESTREET

RESIDENCES.  
BY BRIDGESTREET

MODE.  
APARTHOTEL

LIVING.  
BY BRIDGESTREET

PLACES.  
BY BRIDGESTREET

STÜDYO.  
BY BRIDGESTREET