

# LIVING™

BY BRIDGESTREET

## SÉJOURS & AFFAIRES - LA DÉFENSE PARIS NANTERRE

50, RUE DES VIGNES · NANTERRE, 92000 FRANCE

In the heart of the city, close to the place de la Boule and the surrounding shops. Easy access from to La Défense business district. Relax, you're in Nanterre! The private garden of this pleasant residence and the quiet apartments looking out onto the rue des Vignes will ensure you have a relaxing stay, while still being close to your business needs in Nanterre, La Défense, and Rueil Malmaison.



### AT THIS LOCATION

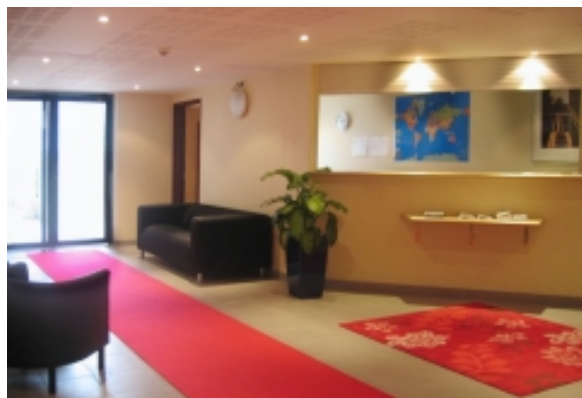
- Disabled Accessible Units
- Reception 8am to 8pm daily

### IN THE APARTMENT

- Fully-Equipped Kitchen

### SERVICES

- Breakfast Service (additional cost)
- Weekly Housekeeping / 1 ménage par semaine



**BRIDGESTREET**  
GLOBAL HOSPITALITY

+33 (1) 42 94 13 13  
BRIDGESTREET.COM

**EXCLUSIVE**  
BY BRIDGESTREET

**RESIDENCES**  
BY BRIDGESTREET

**MODE**  
A PARTHOTEL

**LIVING**  
BY BRIDGESTREET

**PLACES**  
BY BRIDGESTREET

**STÜDYO**  
BY BRIDGESTREET

# LIVING™

BY BRIDGESTREET



## IN THE AREA

- RER Line A station : Nanterre ville.

## SÉJOURS & AFFAIRES - LA DÉFENSE PARIS NANTERRE

50, RUE DES VIGNES · NANTERRE, 92000 FRANCE

Call us: +33 (1) 42 94 13 13

Distance from city center: 0.3 mile(s)

**BRIDGESTREET.**  
GLOBAL HOSPITALITY

+33 (1) 42 94 13 13  
BRIDGESTREET.COM

EXCLUSIVE.  
BY BRIDGESTREET

RESIDENCES.  
BY BRIDGESTREET

MODE.  
APARTHOTEL

LIVING.  
BY BRIDGESTREET

PLACES.  
BY BRIDGESTREET

STÜDYO.  
BY BRIDGESTREET