

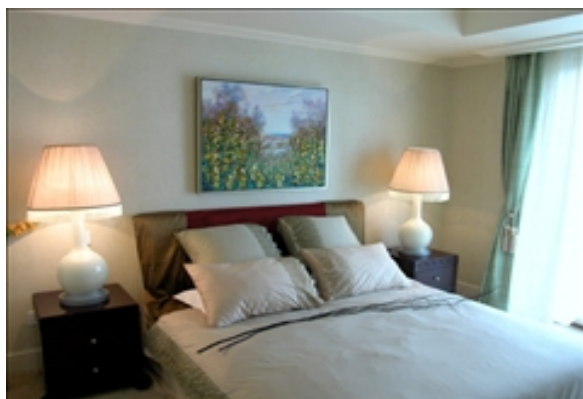
LIVING™

BY BRIDGESTREET

CHATEAU GLORY

8 KEHUI ROAD · BEIJING, 100012 CHINA

The Chateau Glory offers guests the choice of 1 and 2 bedroom apartments. Located at No. 8 Kehui East Road, Chaoyang District, it is close to the Olympic core region, it looks to the 7.6 million-square-meter Green Olympic Forest Park in the west and enjoys the green turf landscape of three golf clubs to the east.



AT THIS LOCATION

- 24 Hour Reception
- 24 Hour Security
- Business Center
- Concierge Service
- Fitness Center
- Laundry & Dry cleaning services / service de nettoyage
- Parking Garage

IN THE APARTMENT

- Air Conditioning
- Alarm System
- Fully-Equipped Gourmet Kitchens
- High Speed Internet Available



SERVICES

- Basic Cable Television Service Provided
- Customized Billing to Suit Your Company's Needs
- Guest Handbook with a guide to the city and local community. Find everything from the area tourist sights, the nearest drug store, to the fitness center hours.
- Our Satisfaction Guarantee / notre garantie satisfaction
- Twice-weekly housekeeping

BRIDGESTREET
GLOBAL HOSPITALITY

1 800 278 7338
BRIDGESTREET.COM

EXCLUSIVE.
BY BRIDGESTREET

RESIDENCES.
BY BRIDGESTREET

MODEL
A PART HOTEL

LIVING.
BY BRIDGESTREET

PLACES.
BY BRIDGESTREET

STÜDYO.
BY BRIDGESTREET

LIVING™

BY BRIDGESTREET



IN THE AREA

- Standing in the core Asian and Olympic area, the Chateau Glory International Club Apartment enjoys the urban conveniences to the largest extent.
- It takes only eight minutes to drive to the Zhongguan Village, 15 minutes to the airport, 25 minutes to the World Trade and 20 minutes to the financial street.

CHATEAU GLORY

8 KEHUI ROAD · BEIJING, 100012 CHINA

Call us: 1 800 278 7338

Distance from city center: 11.2 mile(s)

BRIDGESTREET.
GLOBAL HOSPITALITY

1 800 278 7338
BRIDGESTREET.COM

EXCLUSIVE.
BY BRIDGESTREET

RESIDENCES.
BY BRIDGESTREET

MODE.
APARTHOTEL

LIVING.
BY BRIDGESTREET

PLACES.
BY BRIDGESTREET

STÜDYO.
BY BRIDGESTREET