

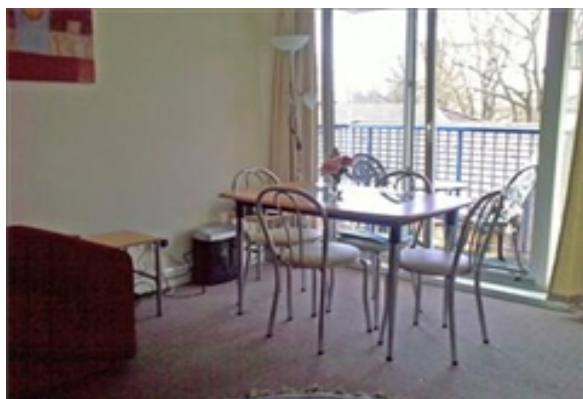
# LIVING™

BY BRIDGESTREET

## QUEENS COURT

BEDFORDSHIRE · LUTON, LU2 7LN UNITED KINGDOM

This is a beautifully presented three bedroom third floor apartment, situated in the Luton Bedfordshire, with views over Wardown Park. It is only a short walk to the station and close to the Arndale Shopping Centre. The apartment has three bedrooms, two bathrooms, lounge, fully fitted modern kitchen, and a balcony. The lounge has lovely views to the front, with a balcony overlooking Wardown Park, with table and 2 chairs. There are two comfortable two seat sofas and a Dining table with four chairs.



### AT THIS LOCATION

- Direct Dial Telephone / ligne téléphonique
- Parking - Complimentary
- Secure Entry System / entrée sécurisée

### IN THE APARTMENT

- Dishwasher / lave vaisselle
- Fully-Equipped Kitchen
- Hairdryer
- Iron and ironing board
- Washer and Dryer

### SERVICES

- Parking Available
- Satellite Television Service Provided
- Weekly Clean



**BRIDGESTREET**  
GLOBAL HOSPITALITY

+44 (0) 20 7792 2222  
BRIDGESTREET.COM

EXCLUSIVE.  
BY BRIDGESTREET

RESIDENCES.  
BY BRIDGESTREET

MODE.  
A PART HOTEL

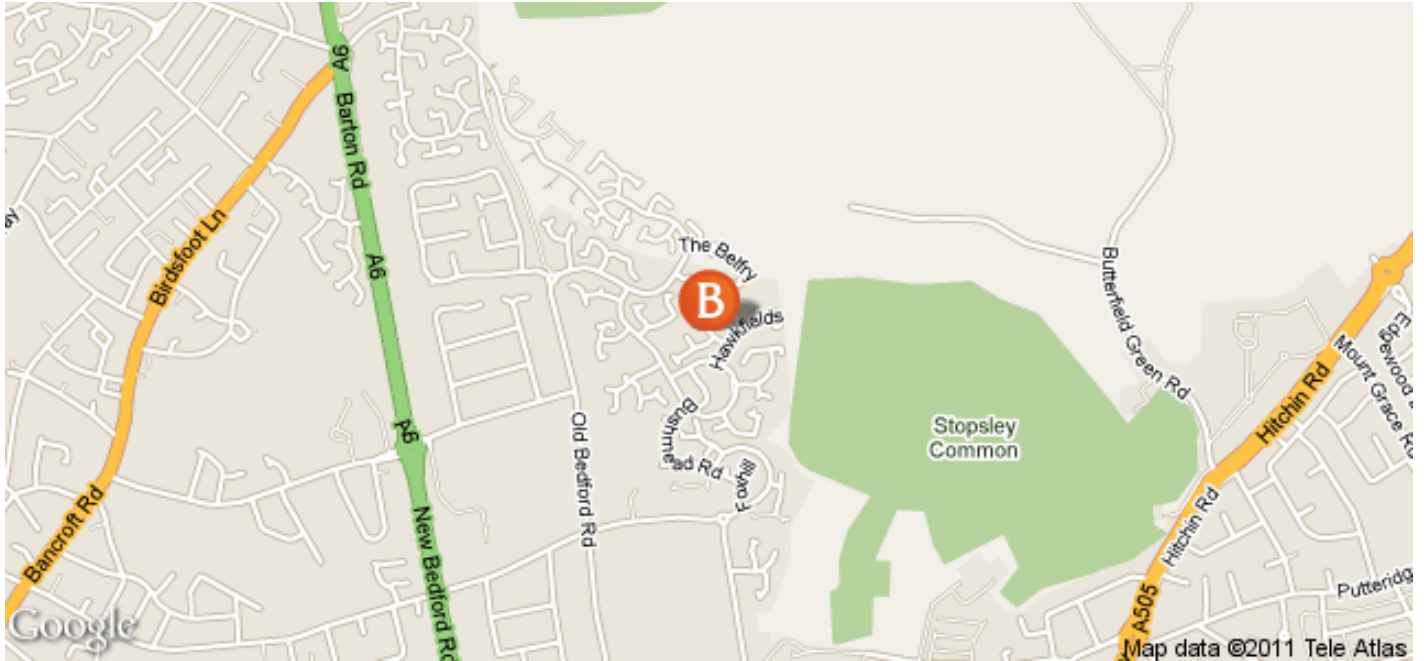
LIVING.  
BY BRIDGESTREET

PLACES.  
BY BRIDGESTREET

STÜDYO.  
BY BRIDGESTREET

# LIVING™

BY BRIDGESTREET



## IN THE AREA

- City Centre: Near by
- Train/Bus station: 5 minutes drive
- Airport: 25 minutes drive
- Supermarket: near by
- Gym/ATM: Near by

## QUEENS COURT

BEDFORDSHIRE · LUTON, LU2 7LN UNITED KINGDOM

Call us: +44 (0) 20 7792 2222

Distance from city center: 2 mile(s)

**BRIDGESTREET.**  
GLOBAL HOSPITALITY

+44 (0) 20 7792 2222  
BRIDGESTREET.COM

**EXCLUSIVE.**  
BY BRIDGESTREET

**RESIDENCES.**  
BY BRIDGESTREET

**MODE.**  
APARTHOTEL

**LIVING.**  
BY BRIDGESTREET

**PLACES.**  
BY BRIDGESTREET

**STÜDYO.**  
BY BRIDGESTREET