

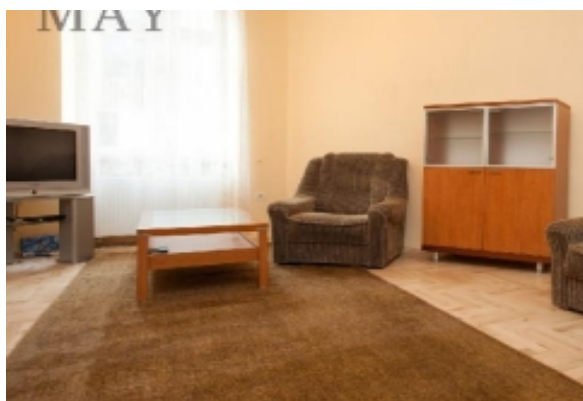
LIVING™

BY BRIDGESTREET

PODZAMCZE 22/3

PODZAMCZE 22/3 · KRAKOW, 31-117 POLAND

an elegant and spacious apartment located in a well maintained building close to Wawel Castle. The apartment comprises a kitchen with dinning room, bedroom with pullout couch and a bathroom with shower, there is also a washing machine. Apartment is heated via two-function gas heating system. The building is located just a moment from the Main Market Square and all of Krakow's main attractions. The apartment is located on high ground floor of a recently renovated building. The apartment is very quiet, the entrance is from the courtyard.



AT THIS LOCATION

IN THE APARTMENT

SERVICES



BRIDGESTREET
GLOBAL HOSPITALITY

+44 (0) 20 7792 2222
BRIDGESTREET.COM

EXCLUSIVE.
BY BRIDGESTREET

RESIDENCES.
BY BRIDGESTREET

MODEL
A PART HOTEL

LIVING.
BY BRIDGESTREET

PLACES.
BY BRIDGESTREET

STÜDYO.
BY BRIDGESTREET

LIVING™

BY BRIDGESTREET



IN THE AREA

- Balice Airport- 12km
- Cisco Office-3.7km
- Bus- 3 minutes walk

PODZAMCZE 22/3

PODZAMCZE 22/3 · KRAKOW, 31-117 POLAND

Call us: +44 (0) 20 7792 2222

Distance from city center: 0.8 mile(s)

BRIDGESTREET.
GLOBAL HOSPITALITY

+44 (0) 20 7792 2222
BRIDGESTREET.COM

EXCLUSIVE.
BY BRIDGESTREET

RESIDENCES.
BY BRIDGESTREET

MODE.
A PARTHOTEL

LIVING.
BY BRIDGESTREET

PLACES.
BY BRIDGESTREET

STÜDYO.
BY BRIDGESTREET