

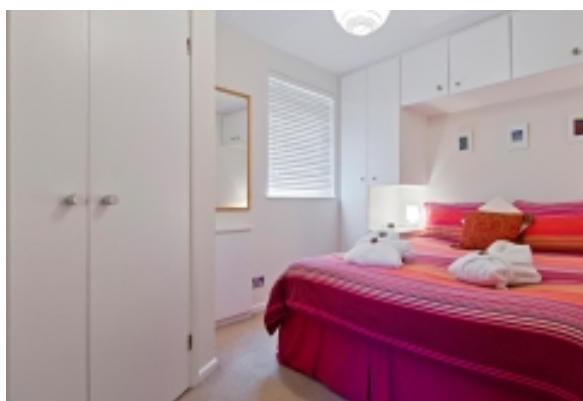
# LIVING™

BY BRIDGESTREET

## CHRISTCHURCH CLOSE

6 CHRISTCHURCH · ST ALBANS, AL1 3NS UNITED KINGDOM

Christchurch Close is a delightful, relaxing oasis in the heart of St. Albans. A hidden jewel. The building is set within its own well manicured grounds with private sitting areas, allocated private parking, a secure entry system and free wifi. Our elegant one bedroom apartment is located on the ground floor. It has a double bed and a sofa bed in the living room. The apartment is located within a few minutes walk of St. Peter's Street which is the main shopping area in St. Albans. The mainline station is about ten to fifteen minutes walk away.



### AT THIS LOCATION

- Fitness centre nearby
- Parking- Available
- Secure Entry System / entrée sécurisée

### IN THE APARTMENT

- Dishwasher / lave vaisselle
- Fully-Equipped Kitchen
- Fully-furnished and well-appointed apartments
- I-Pod Docking Station
- Microwave
- TV with DVD Player
- Washer and Dryer

### SERVICES

- Broadband
- Customized Billing to Suit Your Company's Needs
- Housekeeping



**BRIDGESTREET**  
GLOBAL HOSPITALITY

+44 (0) 20 7792 2222  
BRIDGESTREET.COM

EXCLUSIVE.  
BY BRIDGESTREET

RESIDENCES.  
BY BRIDGESTREET

MODEL  
A PART HOTEL

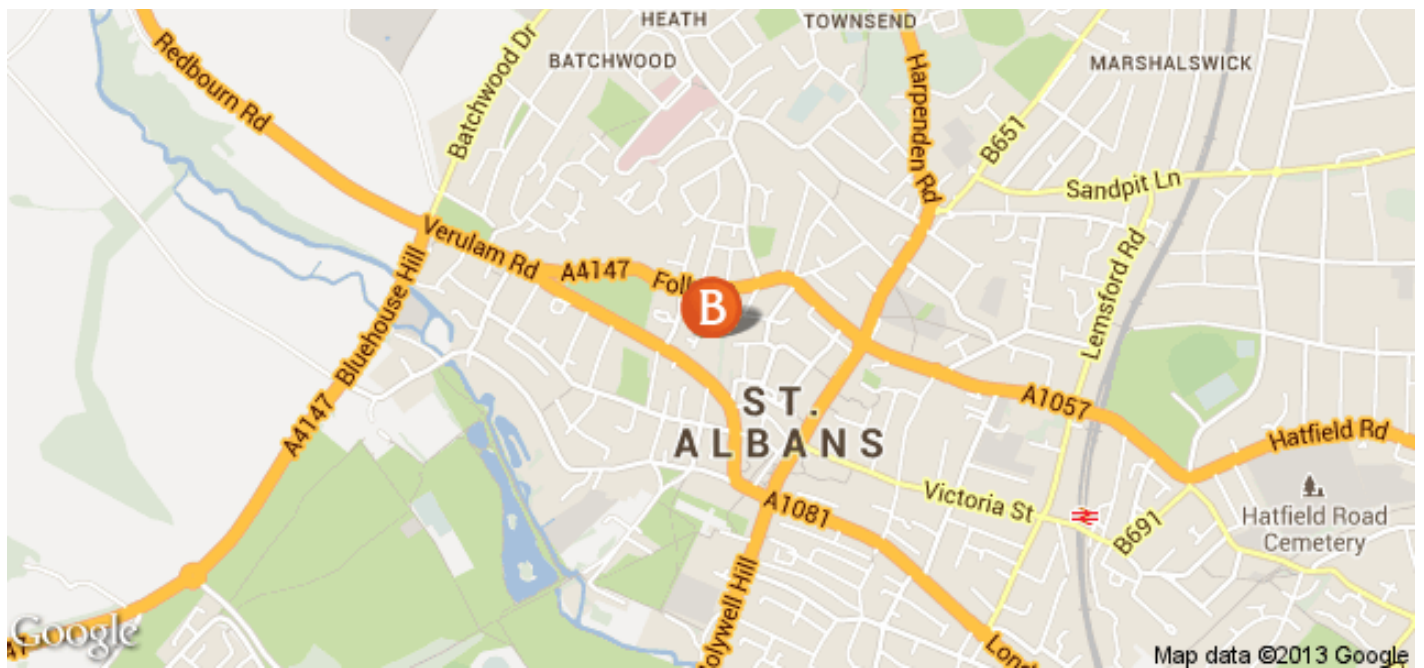
LIVING.  
BY BRIDGESTREET

PLACES.  
BY BRIDGESTREET

STÜDYO.  
BY BRIDGESTREET

# LIVING™

BY BRIDGESTREET



## IN THE AREA

- Airport: 36 minutes driving distance
- Train Station: 6 minutes driving distance
- Supermarket: 7 minutes walking distance
- ATM: 5 minutes walking distance
- Gym: 5 minutes walking distance

## CHRISTCHURCH CLOSE

6 CHRISTCHURCH · ST ALBANS, AL1 3NS UNITED KINGDOM

Call us: +44 (0) 20 7792 2222

Distance from city center: 0.2 mile(s)

**BRIDGESTREET.**  
GLOBAL HOSPITALITY

+44 (0) 20 7792 2222  
BRIDGESTREET.COM

EXCLUSIVE.  
BY BRIDGESTREET

RESIDENCES.  
BY BRIDGESTREET

MODE.  
APARTHOTEL

LIVING.  
BY BRIDGESTREET

PLACES.  
BY BRIDGESTREET

STÜDYO.  
BY BRIDGESTREET