

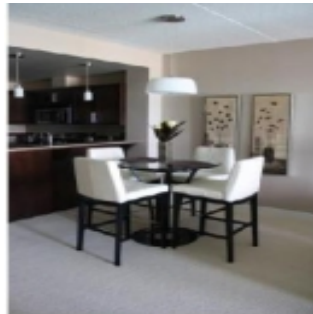
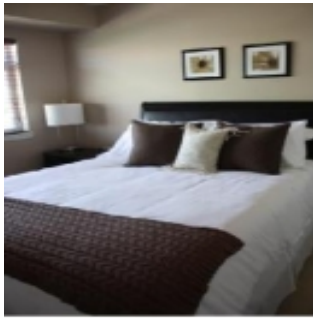
RESIDENCES™

BY BRIDGESTREET

SKYE WATERFRONT

340 WATERFRONT DRIVE · WINNIPEG, MB MB R3B
CANADA

This newly constructed condominium building is located on beautiful Waterfront Drive, in the heart of downtown Winnipeg. The river views are breathtaking and the large windows in each unit bring in maximum natural light. Our designers have incorporated classic contemporary furnishings that are comfortable but luxurious.



AT THIS LOCATION

- Fitness Center
- Residents lounge
- Underground parking

IN THE APARTMENT

- Balconies
- Fully-Equipped Kitchen
- Washer & Dryer in Suite

SERVICES

- Basic Cable Television Service Provided
- Bi-Weekly Housekeeping
- Customized Billing to Suit Your Company's Needs
- Guest Handbook with a guide to the city and local community. Find everything from the area tourist sights, the nearest drug store, to the fitness center hours.
- Key Packet Delivered Prior To Move-In
- Our Satisfaction Guarantee / notre garantie satisfaction

BRIDGESTREET.
GLOBAL HOSPITALITY

1 800 278 7338
BRIDGESTREET.COM

EXCLUSIVE.
BY BRIDGESTREET

RESIDENCES.
BY BRIDGESTREET

MODE.
A PART HOTEL

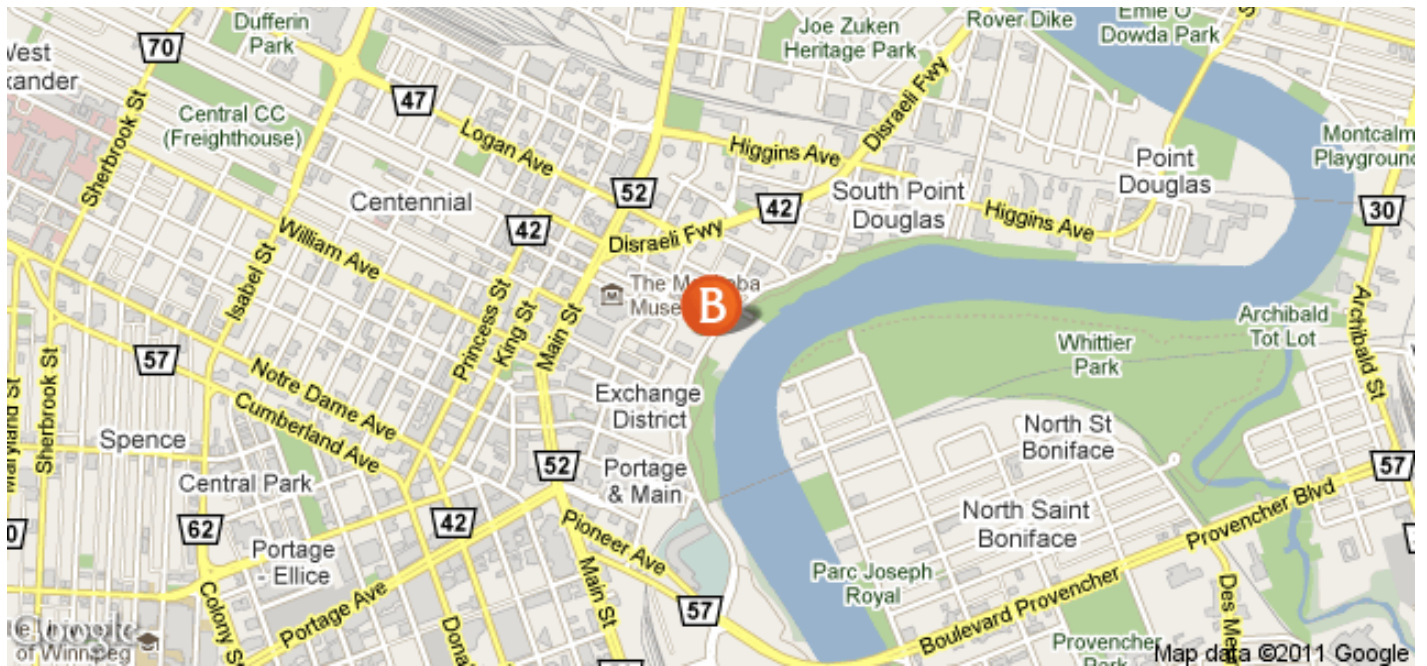
LIVING.
BY BRIDGESTREET

PLACES.
BY BRIDGESTREET

STÜDYO.
BY BRIDGESTREET

RESIDENCES™

BY BRIDGESTREET



IN THE AREA

SKYE WATERFRONT

340 WATERFRONT DRIVE · WINNIPEG, MB R3B 3B3
CANADA

Call us: 1 800 278 7338

Distance from city center: 0.4 mile(s)

BRIDGESTREET.
GLOBAL HOSPITALITY

1 800 278 7338
BRIDGESTREET.COM

EXCLUSIVE.
BY BRIDGESTREET

RESIDENCES.
BY BRIDGESTREET

MODE.
APARTHOTEL

LIVING.
BY BRIDGESTREET

PLACES.
BY BRIDGESTREET

STÜDYO.
BY BRIDGESTREET