

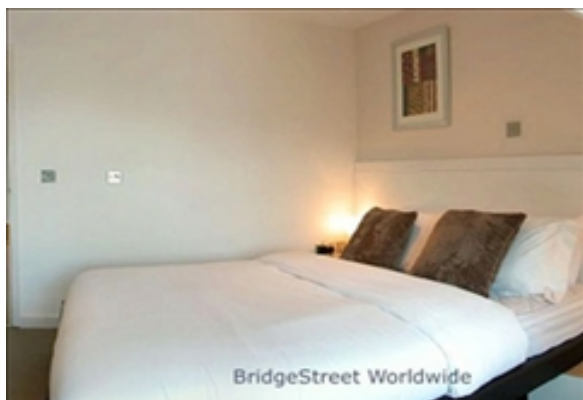
LIVING™

BY BRIDGESTREET

DOMINA RESIDENCE

VIA DI DRAGONCELO 621 · ROME, 0000 ITALY

The Domina Residence is a first-class apartment hotel, built in 2000, located in the residential estate of Dragoncello. This location is close to the sea and ideally positioned between Eur and Magliana Vecchia districts.



AT THIS LOCATION

- 24 Hour Porter
- Onsite Parking
- Valet Dry Cleaning Service

IN THE APARTMENT

- Deck or terrace
- Digital Satellite Television
- Equipped kitchen/kitchenette including cookware, dishware and utensils
- Laundry Facilities
- Lift
- Linens provided
- Private bath

SERVICES

- Additional Optional services (at an additional charge where available):
- Basic TV service
- Concierge/travel desk
- Housekeeping service three times per week
- Internet access/service
- Key pick-up at Reception or by appointment
- Laundry/dry cleaning service
- Management staff

BRIDGESTREET
GLOBAL HOSPITALITY

+44 (0) 20 7792 2222
BRIDGESTREET.COM

EXCLUSIVE.
BY BRIDGESTREET

RESIDENCES.
BY BRIDGESTREET

MODE.
A PART HOTEL

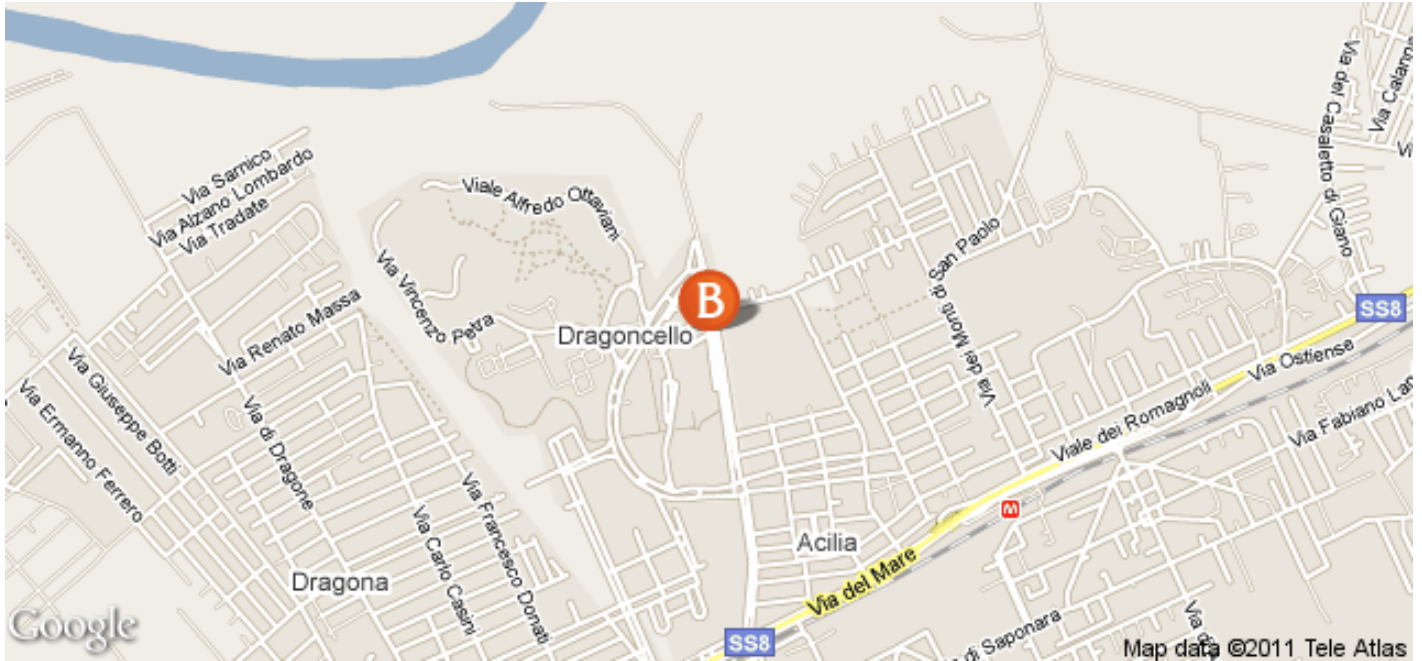
LIVING.
BY BRIDGESTREET

PLACES.
BY BRIDGESTREET

STÜDYO.
BY BRIDGESTREET

LIVING™

BY BRIDGESTREET



IN THE AREA

- Only 10 minutes by car from Fiumicino airport
- Leonardo da Vinci Airport 11 Km
- A comfortable free shuttle connects the Residence to Acilia railway station

DOMINA RESIDENCE

VIA DI DRAGONCELO 621 · ROME, 0000 ITALY

Call us: +44 (0) 20 7792 2222

Distance from city center: 11 mile(s)

BRIDGESTREET.
GLOBAL HOSPITALITY

+44 (0) 20 7792 2222
BRIDGESTREET.COM

EXCLUSIVE.
BY BRIDGESTREET

RESIDENCES.
BY BRIDGESTREET

MODE.
APARTHOTEL

LIVING.
BY BRIDGESTREET

PLACES.
BY BRIDGESTREET

STÜDYO.
BY BRIDGESTREET