

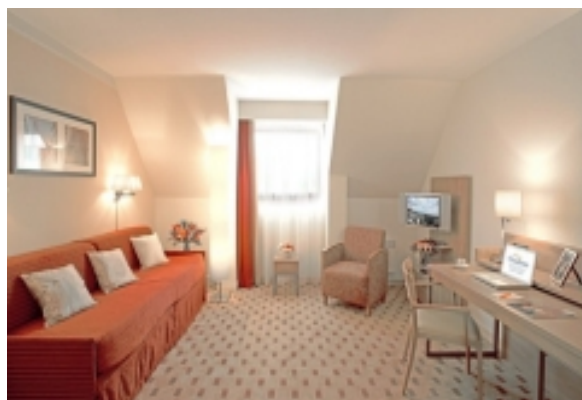
LIVING™

BY BRIDGESTREET

CITADINES - KLÉBER STRASBOURG

50-54, RUE DU JEU DES ENFANTS · STRASBOURG,
67000 FRANCE

Located on a quiet street, this Citadines Apart'hotel sits on the edge of a large pedestrian area encircling the heart of this beautiful city. Its old-fashioned charm, architecture and traditions are sure to hold you spell-bound with its narrow streets with half-timbered houses, pink sandstone cathedral with Gothic spires, the Palais de Rohan and (La Petite France) with its covered bridges over the River Ill. Absolute musts: the 3 museums (Decorative Arts, Fine Arts and Archaeology) housed in the Palais de Rohan



AT THIS LOCATION

IN THE APARTMENT

SERVICES

- Breakfast Service
- Internet Access
- Parking Available

BRIDGESTREET
GLOBAL HOSPITALITY

+33 (1) 42 94 13 13
BRIDGESTREET.COM

EXCLUSIVE.
BY BRIDGESTREET

RESIDENCES.
BY BRIDGESTREET

MODE.
A PART HOTEL

LIVING.
BY BRIDGESTREET

PLACES.
BY BRIDGESTREET

STÜDYO.
BY BRIDGESTREET

LIVING™

BY BRIDGESTREET



IN THE AREA

- Airport : Strasbourg Entzheim (30 mn by shuttle)
- Tramway : L'homme de fer station

CITADINES - KLÉBER STRASBOURG

50-54, RUE DU JEU DES ENFANTS · STRASBOURG,
67000 FRANCE

Call us: +33 (1) 42 94 13 13

Distance from city center: 0.4 mile(s)

BRIDGESTREET.
GLOBAL HOSPITALITY

+33 (1) 42 94 13 13
BRIDGESTREET.COM

EXCLUSIVE.
BY BRIDGESTREET

RESIDENCES.
BY BRIDGESTREET

MODE.
APARTHOTEL

LIVING.
BY BRIDGESTREET

PLACES.
BY BRIDGESTREET

STÜDYO.
BY BRIDGESTREET