

# LIVING™

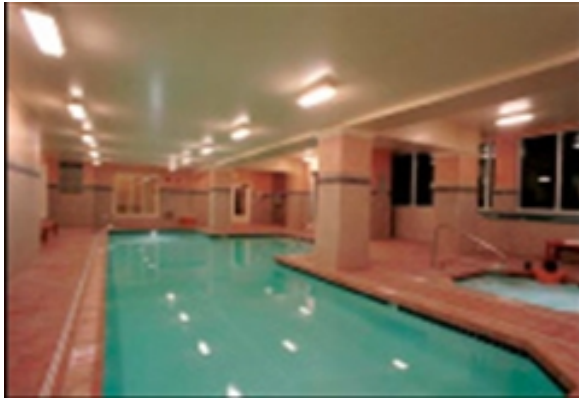
BY BRIDGESTREET

## METROPOLITAN TOWER

---

1942 WESTLAKE AVENUE · SEATTLE, WA 98101 UNITED STATES

Surrounded by the “art and soul” of uptown, the Metropolitan Tower marries traditional elegance with chic urban flavor. Brilliant Puget Sound, Olympic Mountain and city skyline views. Take in a symphony at Benroya Hall, a concert at the Pier or the Paramount, enjoy jazz club sizzle in a nearby Pioneer Square or spend a leisurely day at the Seattle Aquarium. They’re all part of your downtown way of life.



### AT THIS LOCATION

---

- Aerobics Room
- Billiards Room
- Business Center with Fax Machine, Copier, etc. for Guest Use
- Conference Room
- Controlled Access
- Exercise Facility
- Indoor Pool
- Library

### IN THE APARTMENT

---

### SERVICES

---

- Basic Cable Television Service Provided
- Bi-Weekly Housekeeping
- Customized Billing to Suit Your Company's Needs
- Guest Handbook with a guide to the city and local community. Find everything from the area tourist sights, the nearest drug store, to the fitness center hours.
- Key Packet Delivered Prior to Move-In
- Our Satisfaction Guarantee / notre garantie satisfaction

  
**BRIDGESTREET®**  
GLOBAL HOSPITALITY

1 800 278 7338  
BRIDGESTREET.COM

EXCLUSIVE.  
BY BRIDGESTREET

RESIDENCES.  
BY BRIDGESTREET

MODE.  
A PART HOTEL

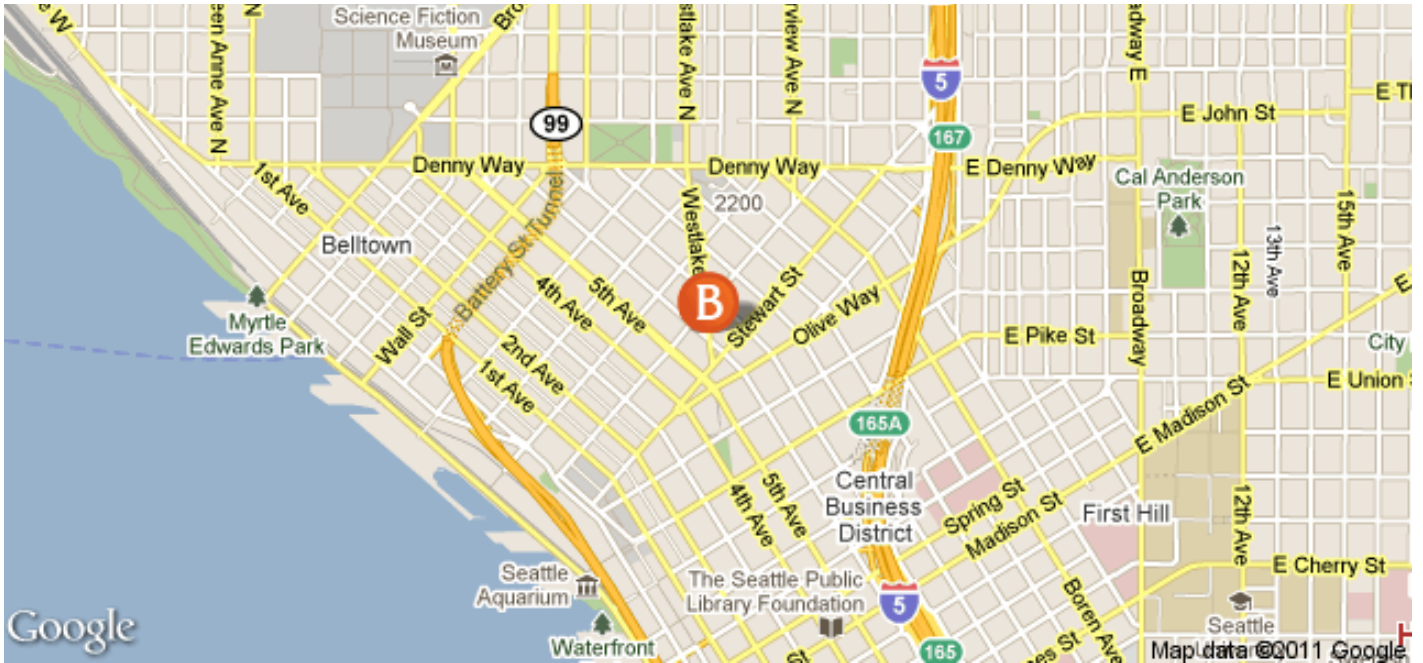
LIVING.  
BY BRIDGESTREET

PLACES.  
BY BRIDGESTREET

STÜDYO.  
BY BRIDGESTREET

# LIVING™

BY BRIDGESTREET



IN THE AREA

## METROPOLITAN TOWER

1942 WESTLAKE AVENUE · SEATTLE, WA 98101 UNITED STATES

Call us: 1 800 278 7338

Distance from city center: 0.8 mile(s)

**BRIDGESTREET.**  
GLOBAL HOSPITALITY

1 800 278 7338  
BRIDGESTREET.COM

EXCLUSIVE.  
BY BRIDGESTREET

RESIDENCES.  
BY BRIDGESTREET

MODE.  
A PARTHOTEL

LIVING.  
BY BRIDGESTREET

PLACES.  
BY BRIDGESTREET

STÜDYO.  
BY BRIDGESTREET