

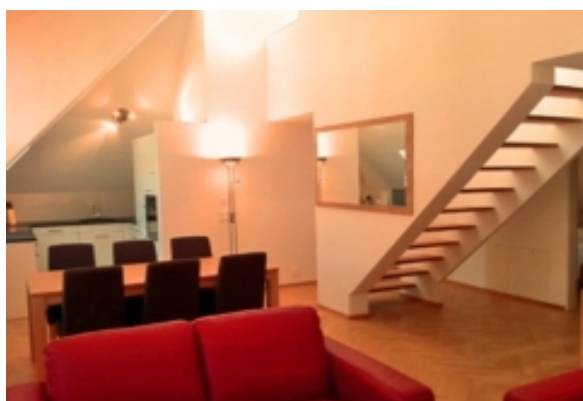
LIVING™

BY BRIDGESTREET

AEBH EIDMATT

EIDMATTSTRASSE 6 · ZURICH, 8032 SWITZERLAND

Eidmattstrasse 6 is located just 100m away from the Kreuzplatz, a central hub within the City between Seefeld and Hottingen. The building is set back from the main road, offering a quiet surrounding, yet the access to convenient facilities. The building was totally renovated during a 13 month building phase and opened up in May 2011.



AT THIS LOCATION

- Direct Dial Telephone / ligne téléphonique
- Elevators Present
- Fitness centre nearby
- Secure Entry System / entrée sécurisée

IN THE APARTMENT

- Balconies
- Dishwasher / lave vaisselle
- Fully-Equipped Kitchen
- Fully-furnished and well-appointed apartments
- Iron and ironing board
- Microwave
- TV with DVD Player
- Washer and Dryer

SERVICES

- Basic Cable Television Service Provided
- Customized Billing to Suit Your Company's Needs
- Housekeeping
- Internet Access
- Our Satisfaction Guarantee / notre garantie satisfaction

BRIDGESTREET
GLOBAL HOSPITALITY

+44 (0) 207 792 2222
BRIDGESTREET.COM

EXCLUSIVE.
BY BRIDGESTREET

RESIDENCES.
BY BRIDGESTREET

ApartHotels.
BY BRIDGESTREET

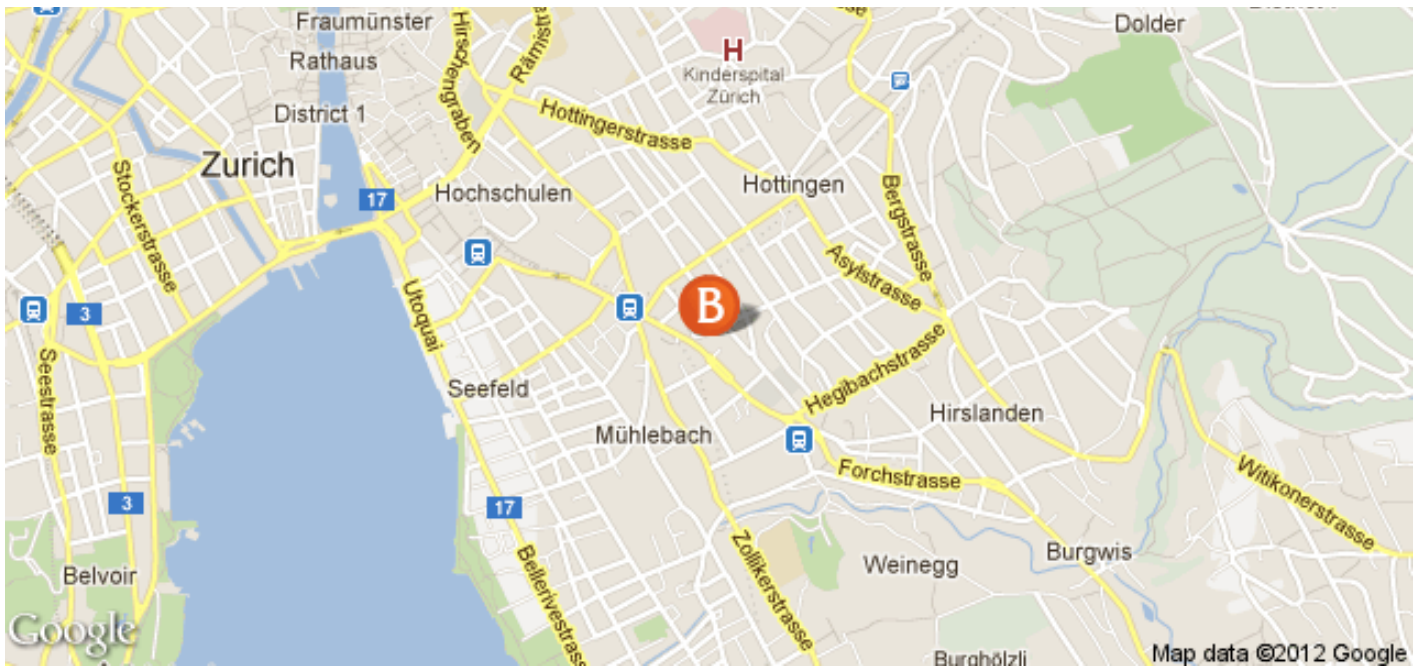
LIVING.
BY BRIDGESTREET

PLACES.
BY BRIDGESTREET

STÜDYO.
BY BRIDGESTREET

LIVING™

BY BRIDGESTREET



IN THE AREA

- Airport: 26 minutes driving distance.
- Train/Bus station: 4 minutes walking distance.
- Supermarket: 2 minutes walking distance.
- GYM: 4 minutes walking distance.
- ATM: 3 minutes driving distance.

AEBH EIDMATT

EIDMATTSTRASSE 6 · ZURICH, 8032 SWITZERLAND

Call us: +44 (0) 207 792 2222

Distance from city center: 1.2 mile(s)

BRIDGESTREET.
GLOBAL HOSPITALITY

+44 (0) 207 792 2222
BRIDGESTREET.COM

EXCLUSIVE.
BY BRIDGESTREET

RESIDENCES.
BY BRIDGESTREET

ApartmentHotels.
BY BRIDGESTREET

LIVING.
BY BRIDGESTREET

PLACES.
BY BRIDGESTREET

STÜDYO.
BY BRIDGESTREET