

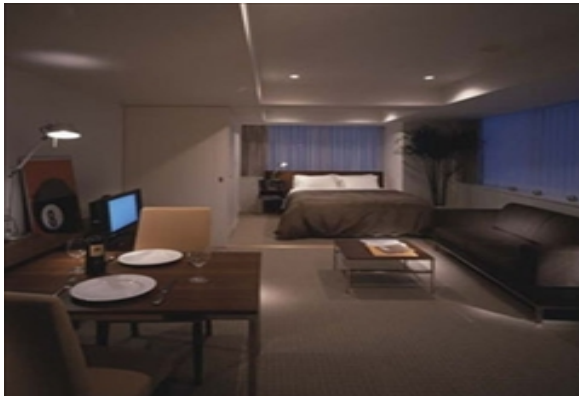
LIVING™

BY BRIDGESTREET

BUREAU GINZA

4-1-12 TSUKIJI, CHUO-KU · TOKYO, 104-0045 JAPAN

Minimum Stay: 1 Month Apartment Type Available: 1 Bedroom Live in luxury in Tokyo's most famous area. Ginza is known as the center of Tokyo's sophisticated shopping, eating, and entertainment. The central location also provides great access to all parts of the city. Apartments feature custom-made furniture designed for maximum comfort and space efficiency. Our bilingual front desk concierge will assist with your living needs. We have both compact studio types and large, luxurious one bedroom apartments available.



AT THIS LOCATION

- Concierge Service
- Conference Room
- Elevators Present

IN THE APARTMENT

- Fully-Equipped Kitchen
- High Speed Internet Available
- Washer and Dryer

SERVICES

- Basic Cable Television Service Provided
- Customized Billing to Suit Your Company's Needs
- Guest Handbook with a guide to the city and local community. Find everything from the area tourist sights, the nearest drug store, to the fitness center hours.
- Houskeeping Weekly
- Our Satisfaction Guarantee / notre garantie satisfaction

BRIDGESTREET
GLOBAL HOSPITALITY

+65 9755 5183
BRIDGESTREET.COM

EXCLUSIVE.
BY BRIDGESTREET

RESIDENCES.
BY BRIDGESTREET

MODE.
A PART HOTEL

LIVING.
BY BRIDGESTREET

PLACES.
BY BRIDGESTREET

STÜDYO.
BY BRIDGESTREET

LIVING™

BY BRIDGESTREET



IN THE AREA

- 6 minute walk to Ginza Crossing - shopping, restaurants, entertainment
- Six subway lines within an eight minute walk of the building.
- Walking distance to the world famous Tsujiki Market.
- Prada, Chanel, Coach, Vuitton Stores in nearby Ginza.

BUREAU GINZA

4-1-12 TSUKIJI, CHUO-KU · TOKYO, 104-0045 JAPAN

Call us: +65 9755 5183

Distance from city center: 4.6 mile(s)

BRIDGESTREET.
GLOBAL HOSPITALITY

+65 9755 5183
BRIDGESTREET.COM

EXCLUSIVE.
BY BRIDGESTREET

RESIDENCES.
BY BRIDGESTREET

MODE.
APARTHOTEL

LIVING.
BY BRIDGESTREET

PLACES.
BY BRIDGESTREET

STÜDYO.
BY BRIDGESTREET