

LIVING™

BY BRIDGESTREET

CITADINES TOKYO SHINJUKU

1-28-13 SHINJUKU, SHINJUKU-KU · TOKYO, 160-0022
JAPAN

Located within walking distance of the Shinjuku East area, one of Tokyo's thriving urban centres, Citadines Tokyo Shinjuku is a contemporary residence which enjoys a prime location close to the Marunouchi and Toei Shinjuku subway stations. At Citadines Tokyo Shinjuku, you can look forward to a pleasant stay that combines the convenience of a hotel with the freedom and privacy of an apartment. The residence's range of optional services are customized to suit your business and leisure needs, allowing you a choice of short or long term stays.



AT THIS LOCATION

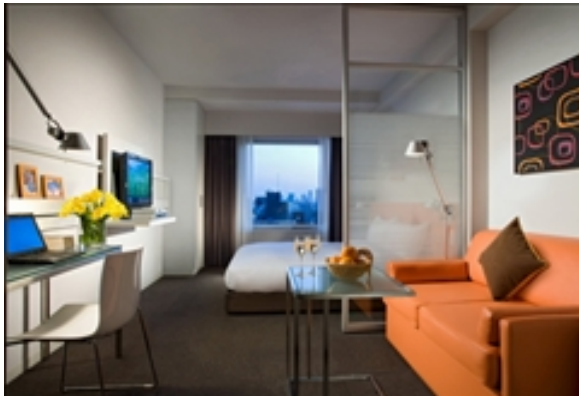
- 24 Hour Reception
- Fitness Center
- Laundry Facilities On-Site
- Parking Garage
- Valet Dry Cleaning Service

IN THE APARTMENT

- Air Conditioning
- High Speed Internet Available
- In Room Safe
- Kitchenette

SERVICES

- Basic Cable Television Service Provided
- Customized Billing to Suit Your Company's Needs
- Daily housekeeping Monday - Saturday, excluding Holidays
- Guest Handbook with a guide to the city and local community. Find everything from the area tourist sights, the nearest drug store, to the fitness center hours.
- Our Satisfaction Guarantee / notre garantie satisfaction



BRIDGESTREET®
GLOBAL HOSPITALITY

+65 9755 5183
BRIDGESTREET.COM

EXCLUSIVE.
BY BRIDGESTREET

RESIDENCES.
BY BRIDGESTREET

MODE.
A PARTHOTEL

LIVING.
BY BRIDGESTREET

PLACES.
BY BRIDGESTREET

STÜDYO.
BY BRIDGESTREET

LIVING™

BY BRIDGESTREET



IN THE AREA

- Citadines Tokyo Shinjuku is conveniently situated near restaurants, supermarkets, shopping malls, the Shinjuku hospital and Shinjuku Gyoen National Garden.

CITADINES TOKYO SHINJUKU

1-28-13 SHINJUKU, SHINJUKU-KU · TOKYO, 160-0022
JAPAN

Call us: +65 9755 5183

Distance from city center: 1.5 mile(s)

BRIDGESTREET.
GLOBAL HOSPITALITY

+65 9755 5183
BRIDGESTREET.COM

EXCLUSIVE.
BY BRIDGESTREET

RESIDENCES.
BY BRIDGESTREET

MODE.
APARTHOTEL

LIVING.
BY BRIDGESTREET

PLACES.
BY BRIDGESTREET

STÜDYO.
BY BRIDGESTREET