

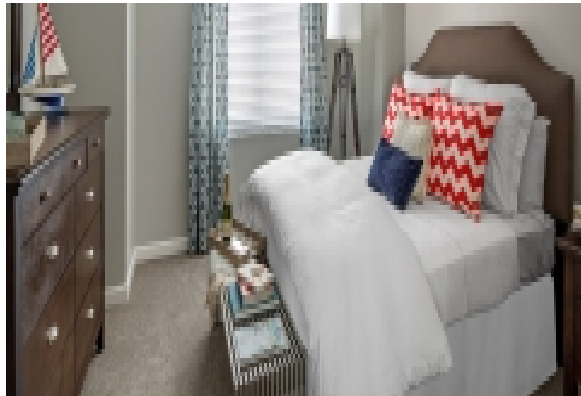
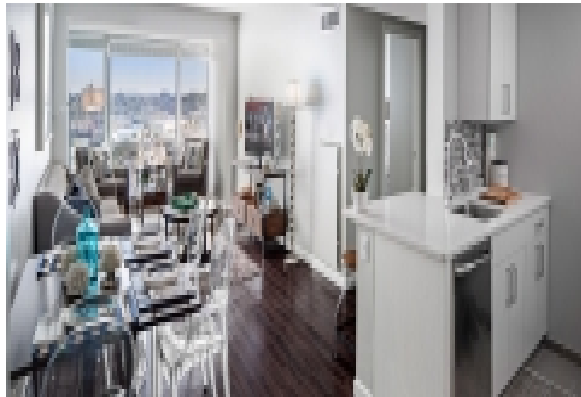
LIVING™

BY BRIDGESTREET

PARK LANE SEAPORT

ONE PARK LANE · BOSTON, MA 02210 UNITED STATES

This brand new building features a picturesque setting along Boston's waterfront is only 1 reason for living at beautiful Park Lane. This location provides convenient access to I 93 and the Massachusetts Turnpike and being adjacent to MBTA's new Silver Line you will find yourself only minutes away from the financial district, Faneuil Hall Marketplace and the famous North End. Floor to ceiling window and spectacular view of Boston Harbor and the city



AT THIS LOCATION

- 24 Hour Security
- Cat Friendly
- Convenience Store On-Site
- Elevators Present
- Exercise Facility
- Laundry Facilities On-Site
- Parking Garage
- Rooftop Terrace

IN THE APARTMENT

- Alarm System
- Beautiful Views
- Ceramic Tile Floors
- Fully-Equipped Kitchen
- High Speed Internet Available
- Washer & Dryer in Suite

SERVICES

- Tillinger's Full Service concierge service

BRIDGESTREET.
GLOBAL HOSPITALITY

1 800 278 7338
BRIDGESTREET.COM

EXCLUSIVE.
BY BRIDGESTREET

RESIDENCES.
BY BRIDGESTREET

MODE.
A PARTHOTEL

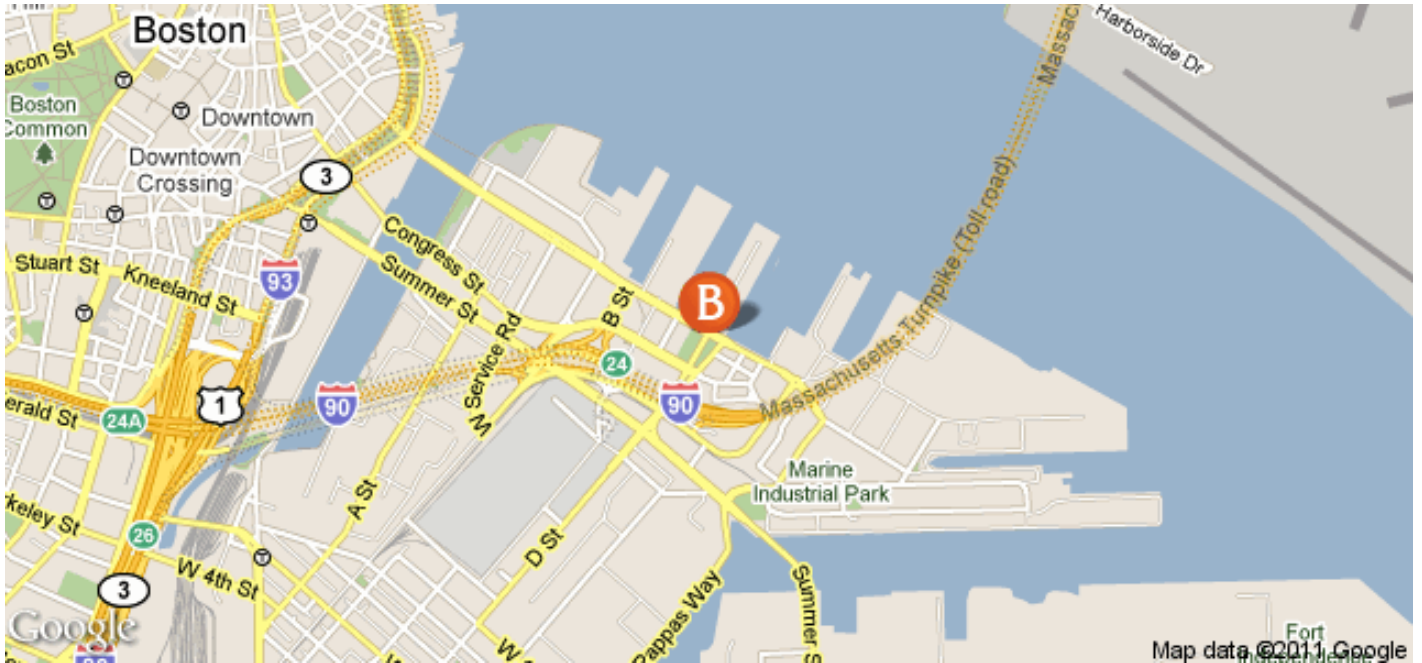
LIVING.
BY BRIDGESTREET

PLACES.
BY BRIDGESTREET

STÜDYO.
BY BRIDGESTREET

LIVING™

BY BRIDGESTREET



IN THE AREA

- Minutes to Boston's Logan Airport
- Easy access to I 93 and Mass Pike
- Walking Distance to Boston's World Trade Center
- Less than a mile from Boston's new Conventions Center.
- Easy commute or walk to the Financial District.

PARK LANE SEAPORT

ONE PARK LANE · BOSTON, MA 02210 UNITED STATES

Call us: 1 800 278 7338

Distance from city center: 1.1 mile(s)

BRIDGESTREET.
GLOBAL HOSPITALITY

1 800 278 7338
BRIDGESTREET.COM

EXCLUSIVE.
BY BRIDGESTREET

RESIDENCES.
BY BRIDGESTREET

MODE.
APARTHOTEL

LIVING.
BY BRIDGESTREET

PLACES.
BY BRIDGESTREET

STÜDYO.
BY BRIDGESTREET