

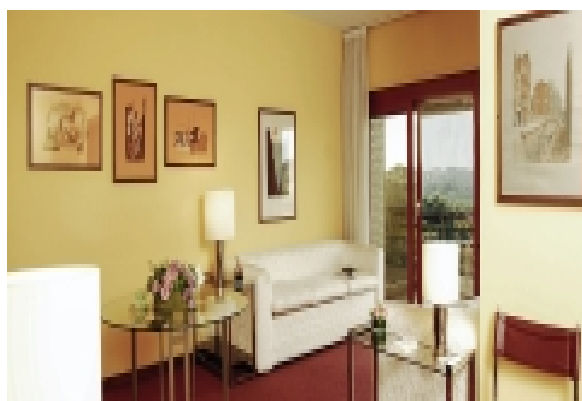
LIVING™

BY BRIDGESTREET

ADAGIO ROME

VIA DAMIANO CHIESA 8 · ROME, PO6 4UY ITALY

This Adagio Aparthotel is located in a green area of Rome, close to the shopping district and the Gemelli hospital, and is 2.5 miles (4 km) from Vatican City. The Aparthotel offers 107 air-conditioned apartments, including 2-3 person studio apartments and apartments with 1 bedroom for 4 people. A range of services is on offer: meeting rooms, a restaurant serving breakfast and private car park. The main tourist attractions are easily accessible from the nearby Balduina train station



AT THIS LOCATION

- 24 Hour Security
- Airport transfer
- Gated Entrance
- Laundry & Dry cleaning services / service de nettoyage
- Parking Available (optional, extra charge)

IN THE APARTMENT

- Balcony (Selected Apartments)
- Dishwasher / lave vaisselle
- Fully-Equipped Kitchen
- Hairdryer
- Iron and ironing board
- TV with DVD Player



SERVICES

- Basic cable TV
- Customized Billing to Suit Your Company's Needs
- Guest Handbook with a guide to the city and local community. Find everything from the area tourist sights, the nearest drug store, to the fitness center hours.
- Housekeeping
- Management staff
- No minimum stay
- Our Satisfaction Guarantee / notre garantie satisfaction
- Welcome Pack

BRIDGESTREET®
GLOBAL HOSPITALITY

+44 (0) 20 7792 2222
BRIDGESTREET.COM

EXCLUSIVE.
BY BRIDGESTREET

RESIDENCES.
BY BRIDGESTREET

MODE.
APARTHOTEL

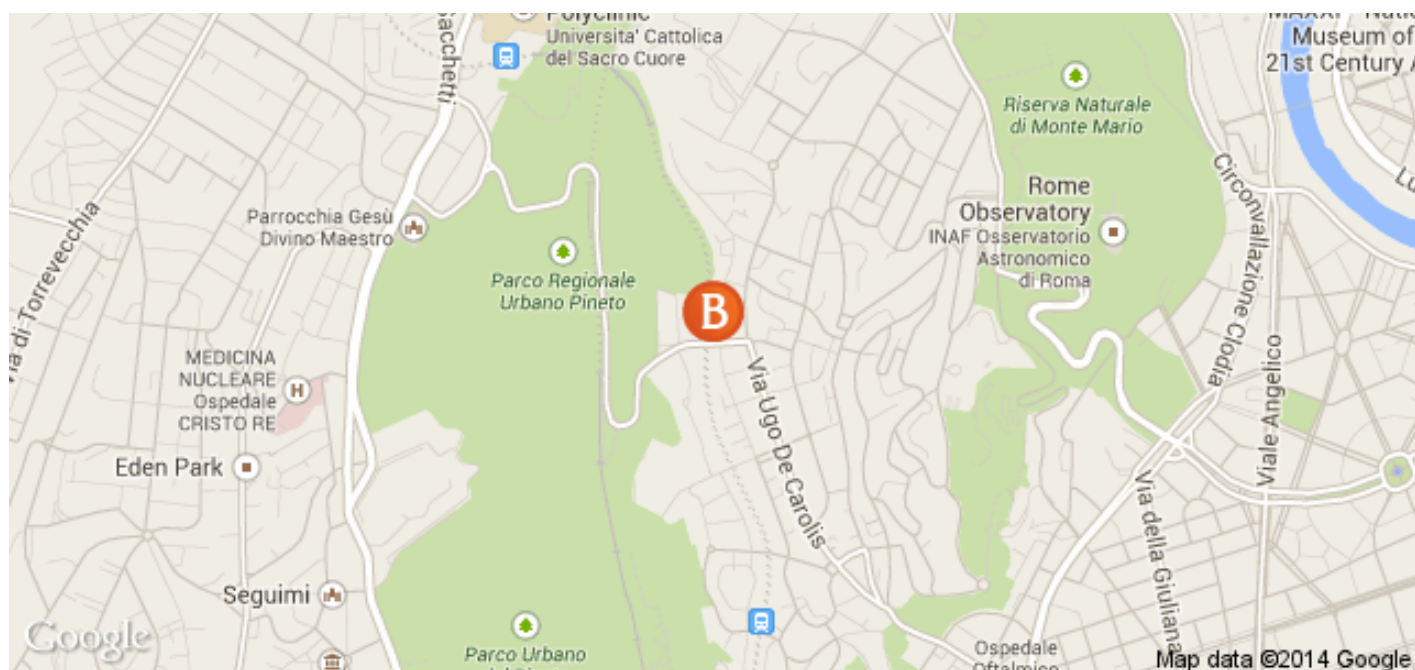
LIVING.
BY BRIDGESTREET

PLACES.
BY BRIDGESTREET

STÜDYO.
BY BRIDGESTREET

LIVING™

BY BRIDGESTREET



IN THE AREA

- Airport - 10km
- Train station - 2 minutes
- Bus- 3 minutes walk
- ATM - 3 minutes walk
- Gym -1 km

ADAGIO ROME

VIA DAMIANO CHIESA 8 · ROME, PO6 4UY ITALY

Call us: +44 (0) 20 7792 2222

Distance from city center: 3.2 mile(s)

BRIDGESTREET.
GLOBAL HOSPITALITY

+44 (0) 20 7792 2222
BRIDGESTREET.COM

EXCLUSIVE.
BY BRIDGESTREET

RESIDENCES.
BY BRIDGESTREET

MODE.
A PARTHOTEL

LIVING.
BY BRIDGESTREET

PLACES.
BY BRIDGESTREET

STÜDYO.
BY BRIDGESTREET